

Standard colors and finishes Couleurs et finis standards

-  **WH - Matte White** Blanc mat (RAL 9010)
-  **BK - Matte Black** Noir mat (RAL 9005)
-  **BR - Matte Brass (painted)** Laiton mat (peint) (RAL 080 70 50)
-  **CO - Matte Copper (painted)** Cuivre mat (peint) (RAL 8004)
-  **AG - Matte Aluminum Grey** Gris Aluminium mat (RAL 9007)

Optional colors and finishes Couleurs et finis optionnels

-  **NB - Semi-gloss Night Blue** Bleu Nuit semi-lustre (RAL5026)
-  **OR - Semi-gloss Orange Red** Orange Rouge semi-lustre (RAL 2001)
-  **RG - Semi-gloss Retro Green** Vert Rétro semi-lustre (RAL 6019)
-  **ES - Semi-gloss Espresso brown** Brun Espresso semi-lustre (RAL 8017)
-  **WG - Semi-gloss White Grey** Gris Blanc semi-lustre (RAL 7035)

Naturel felt and cork colors Couleurs du feutre et du liège naturels



F170 - Fitzfelt® Ashe natural felt
Feutre naturel Ashe de Fitzfelt®



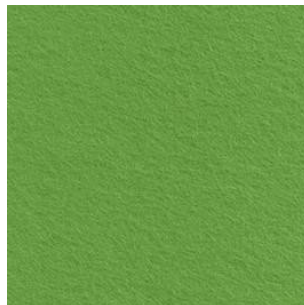
F175 - Fitzfelt® Graphit natural felt Feutre naturel Graphit de Fitzfelt®



F548 - Fitzfelt® Türkis natural felt Feutre naturel Türkis de Fitzfelt®



F105 - Fitzfelt® Rost natural felt Feutre Rost de Fitzfelt®

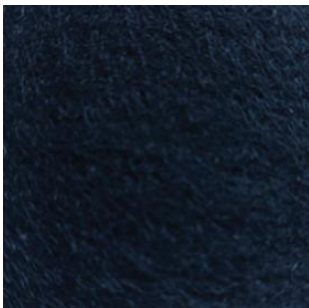


F377 - Fitzfelt® Maigrün natural felt Feutre Maigrün de Fitzfelt®



CK - Natural Cork Liège naturel

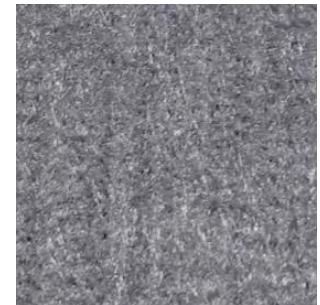
Synthetic felt colors and finishes Couleurs et finis du feutre synthétique



PB - Pure Black



CG - Charcoal Grey



BG - Bold Grey



MY - Mustard Yellow

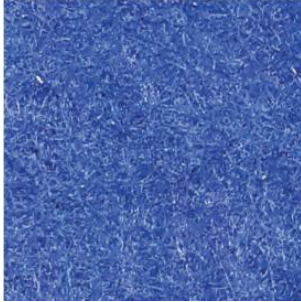


BR - Brick Red

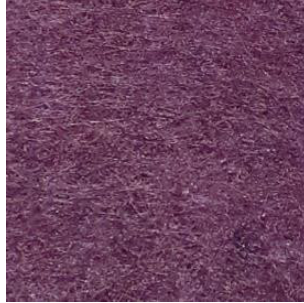


EG - Elephant Grey

luciole



RB – Royal Blue



PR – Purple Rain